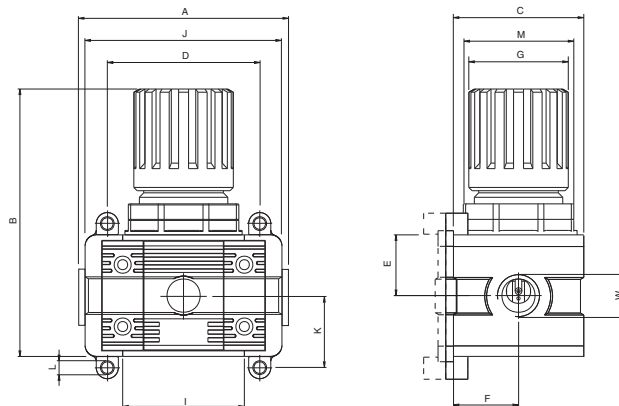


# Regulators

3.9

page 10



## Main features

Rolling membrane regulation valve with secondary air bleed, admission pressure compensation, without intrinsic consumption, with detend-stop adjusting knob.

## Technical information

Operating pressure in p1: Max. 15 bar at 20° C  
 Operating pressure out p2: 0 bar ... 12 bar, others on request  
 Operating medium: Compressed air  
 Operating temperature: -10° C ... + 50° C  
 Installation positioning: Vertical  
 Materials: Body: Technopolymer  
 Gaskets: NBR  
 Filter: Sintered bronze  
 End parts: Die-cast zinc

Pressure gauge (included in delivery):  
 Accuracy class: 1,6  
 Diameter: 40 mm  
 Connecting thread: G 1/8"  
 Indicator range: 0 ... 12 bar

|   | R-1              | R-2              | R-3          |
|---|------------------|------------------|--------------|
| A | 72               | 89               | 100          |
| B | 97               | 121              | 140,5        |
| C | 45               | 59               | 70           |
| D | 76               | 89               | 106*         |
| E | 21               | 27,5             | 32,5         |
| G | 36               | 45               | 50,5         |
| I | 43               | 55               | 65           |
| J | 54               | 69               | 79           |
| K | 17,25            | 22               | 27           |
| L | D X M4           | D X M5           | D X M6       |
| M | M32 x 1,5        | M40 x 1,5        | M47 x 1,5    |
| W | (1/8")-1/4"-3/8" | (1/4")-3/8"-1/2" | 1/2"-3/4"-1" |

\*) Variante G1" plus 5 mm

| Family | Port Size | Flow Rate qnN* | Part Number |
|--------|-----------|----------------|-------------|
| 1      | G 1/4 "   | 2050 l/min     | R-1-1/4     |
| 1      | G 3/8"    | 2050 l/min     | R-1-3/8     |
| 2      | G 3/8"    | 3200 l/min     | R-2-3/8     |
| 2      | G 1/2"    | 3200 l/min     | R-2-1/2     |
| 3      | G 3/4"    | 6200 l/min     | R-3-3/4     |
| 3      | G 1"      | 6200 l/min     | R-3-1       |

\* Measured at p1=10 bar, p2=6 bar, Δp=1 bar according to CETOP RP 50P

